



DAYMAN 23
TITLE: TITLED
LAND

\$716,195

SITE COSTS & TURN KEY
10K LESS WITH FHOG

Lot 323 Lavender Street, WOLLERT

**THE PA
TCH**

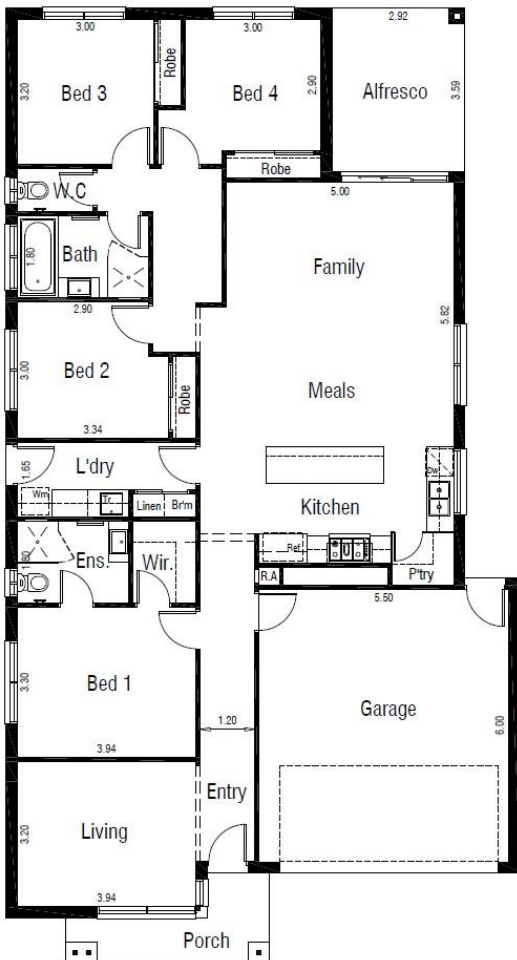
350m²



4	2	2
		

HOUSE & LAND PACKAGE INCLUDES:

- ALL DESIGN GUIDELINES
- CHOICE OF FACADE'S
- 2590 HIGH CEILINGS
- FRONT & REAR LANDSCAPING
- FENCES, BLINDS & LETTERBOX
- 900MM APPLIANCES
- 20MM STONE KIT, ENSUITE & BATHROOM
- HEATING AND COOLING
- COLOURED CONCRETE DRIVEWAYS & PATH
- **PLUS MUCH MORE!**



Images for illustration purposes only and may include examples of upgrade options along with landscaping, blinds and décor light fittings. Site costs need to be confirmed with Central Property Sales Representative if they are fixed or an allowance has been made. Design guidelines are included however subject to developer's final approval. Pricing may vary subject to land availability.

Bing Li

0404 537 624

Bing.li@cpmcgroup.com.au