



CYPRESS 29
TITLE: TITLED
LAND

\$800,945
SITE COSTS & TURN KEY
5 BEDROOM HOME FOR LESS THAN
\$825K!

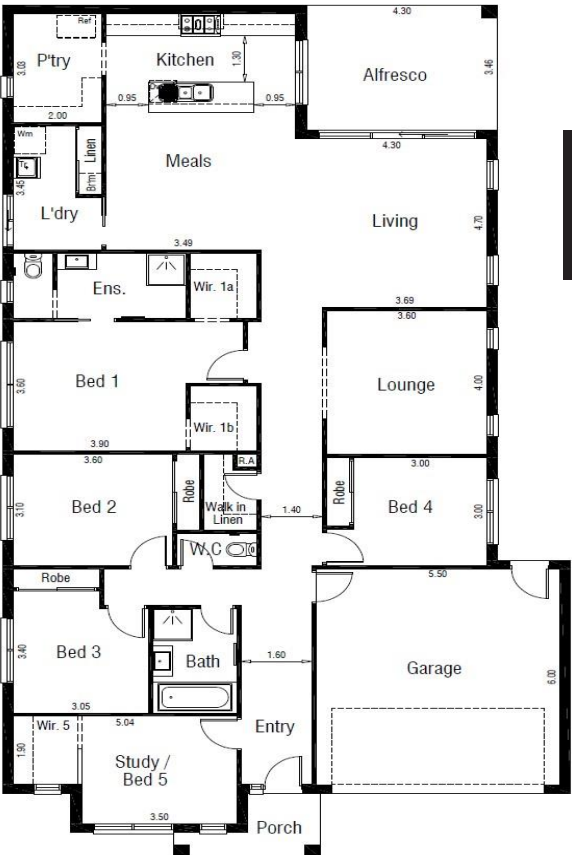
Lot 101 Majorelle Boulevard, WOLLERT



448m²



5	2	2
		



HOUSE & LAND PACKAGE INCLUDES:

- ALL DESIGN GUIDELINES
- CHOICE OF FACADE'S
- 2590 HIGH CEILINGS
- FRONT & REAR LANDSCAPING
- FENCES, BLINDS & LETTERBOX
- 900MM APPLIANCES
- 20MM STONE KIT, ENSUITE & BATHROOM
- HEATING AND COOLING
- COLOURED CONCRETE DRIVEWAYS & PATH
- **PLUS MUCH MORE!**

DISPLAYED ON 4 COOMA STRET, MANOR LAKES!

Bing Li
 0404 537 624
Bing.li@cpmcgroup.com.au

Images for illustration purposes only and may include examples of upgrade options along with landscaping, blinds and décor light fittings. Site costs need to be confirmed with Central Property Sales Representative if they are fixed or an allowance has been made. Design guidelines are included however subject to developer's final approval. Pricing may vary subject to land availability.